

90 ft 2023 Carboyacht 90  
**€3,000,000 (US\$3,286,285)**  
 Istanbul, Turkey



**Boat Details**

Make:	<b>Carboyacht</b>	Class:	<b>Motor Yacht</b>	Heads:	<b>4</b>
Model:	<b>90</b>	Hull Material:	<b>Aluminum</b>	Fuel Type:	<b>Diesel</b>
Year:	<b>2023</b>	Drive Type:	<b>Direct Drive</b>	Max Speed:	<b>15 kn</b>
Length:	<b>90 ft</b>	Beam:	<b>23 ft 8 in</b>	Max Draft:	<b>5 ft 6 in</b>
Price:	<b>€3,000,000 (US\$3,286,285)</b>	Boat Location:	<b>Istanbul, Turkey</b>		
Condition:	<b>New</b>	Cabins:	<b>5</b>		

**Barclay Tuck | Barclay Tuck Yachts**

1800 Sunset Harbour Drive, Miami Beach, Florida, United States

Tel: **(858) 699-7637**

barclaytuck@gmail.com

www.barclaytuckyachts.com

## Description

### Presenting The New Carbo Yacht 90' 2023

This Vessel was Hand Crafted from Aluminum in Turkey.

Carbo Yacht Has Over 40 Years of Experience in the Aluminum Industry.

The Aluminum Material Used in Every Build Provides Strength, Safety and Longevity to the Vessel.

#### Key Features

- Volvo Penta D8 550 Engines with Only 42 Hours
- 650 Nautical Mile Range
- Open Floor Plan
- Samsung Appliances
- Large Windows Throughout
- 5 Stateroom, All Double Beds Plus Crew
- Spacious Bridge with Bar Area
- Powered Swim Stairs

**Easily Shipped to the US or Wherever Your Yachting May Take You.**

## Information & Features

### VOLVO PENTA D8 550 (Engine 1)

Type:	<b>Inboard</b>	Drive Type:	<b>Direct Drive</b>
Fuel Type:	<b>Diesel</b>	Power:	<b>550 hp</b>
Hours:	<b>42</b>		

### VOLVO PENTA D8 550 (Engine 2)

Type:	<b>Inboard</b>	Drive Type:	<b>Direct Drive</b>
Fuel Type:	<b>Diesel</b>	Power:	<b>550 hp</b>
Hours:	<b>42</b>		

### Dimensions

LOA:	<b>90 ft</b>
Beam:	<b>23 ft 8 in</b>
Max Draft:	<b>5 ft 6 in</b>

### Speed

Cruising Speed:	<b>12 kn</b>
Max Speed:	<b>15 kn</b>
Range:	<b>650 nmi</b>

### Tanks

Fuel:	<b>1 x 898 gal</b>
Fresh Water:	<b>2 x 132 gal</b>

## Accommodations

Cabins: 5

Heads: 4

## Specifications

- YEAR: 2023
- LOA: 90'
- BEAM: 23' 8"
- DRAFT: 5' 6"
- CABINS: 5 + CREW
- HEADS: 4 + CREW
- ENGINES: (2) VOLVO PENTA D8 550
- GENERATOR: ONAN, 17 KW MARINE
- MAX SPEED: 15 KNOTS
- CRUISING SPEED: 12 KNOTS
- FUEL TANK: 898 GALLONS
- WATER TANK: (2) 132 GALLONS
- WASTEWATER TANK: 264 GALLONS
- TOILET TANK: 198 GALLONS

## ELECTRONICS

- GARMIN B7XSV 7" GLASS COCKPIT SCREEN
- MFD8612 12" MULTIFUNCTIONAL SCREEN
- EVC SYSTEM INDICATOR 2.5
- 2 VOLVO PENTA ELECTRONIC THROTTLE
- HYDRAULIC STEERING PUMP
- HYDRAULIC STEERING WHEEL
- AUTOPILOT
- DEPTH, WATER TEMP & SPEED: GARMIN TRANSDUCER NMEA 2000
- CHARTPLOTTER: GARMIN
- AUTO PILOT: GARMIN
- GPS: GARMIN
- VHF: GARMIN VHF115i

## TELEVISIONS

- MAIN SALON: 65" SAMSUNG 65Q80T
- MASTER CABIN: 55" SAMSUNG 55Q80T
- ALL GUEST CABINS: 32" SAMSUNG 32T5300

## **Disclaimer**

The Company offers the details of this vessel in good faith but cannot guarantee or warrant the accuracy of this information nor warrant the condition of the vessel. A buyer should instruct his agents, or his surveyors, to investigate such details as the buyer desires validated. This vessel is offered subject to prior sale, price change, or withdrawal without notice.

















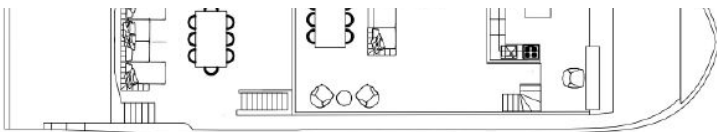












MAIN DECK LAYOUT



LOWER DECK LAYOUT

