



CANTIERE
DELLE MARCHE

explorer yachting starts here

10 ANNI
VER
SARY

RJ 130





CANTIERE
DELLE MARCHE
explorer yachting starts here

10 ANNI
VER
SARY

YACHT INTRODUCTION

The new RJ line breaks new ground
in the approach to yacht design.

An explorer range with large social spaces both inside and outside, offering a close contact to the sea in order to enjoy staying on board during longtime cruising everywhere.
A combination of the essence of an explorer with peculiar features in terms of comfort and liveability designed for the Owner expectations.

Where it may seem impossible to come up with a new idea for Explorer yachts, with few design innovations left to discover, CdM introduces a new concept designed to take center stage - an Explorer yacht fashioned to provide extreme seaworthiness combined with top-end elegance. The RJ line of luxury explorer yachts combines a great wealth of exterior spaces with a real go-anywhere, do-anything expedition pedigree.

Her elegantly austere silhouette brings the unmistakable signature of Francesco Paszkowski who, alongside her noteworthy geometry, introduced countless well-conceived features in terms of logistics, livability and functionality.



CANTIERE
DELLE MARCHE
explorer yachting starts here

10 ANNI
VER
SARY

YACHT STATUS AND PRICE

Price

€ 20.500.000

Engine hours

330 hr

VAT Status

Leasing ongoing

Main Generators hours

Port: 1.100 hrs

Starboard: 1.056 hrs

Year

2021

FLAG

Malta

Classification

RINA, C ✱ HULL • MACH Ych

Unrestricted navigation

Availability

From 1-st October 2022

Current Location

Genoa (Italy)





CANTIERE
DELLE MARCHE
explorer yachting starts here

10 ANNI
VER
SARY

VIDEO GALLERY



RJ WALK THROUGH VIDEO

← GUARDA IL VIDEO



RJ WHILE CRUISING

← GUARDA IL VIDEO



CANTIERE
DELLE MARCHE
explorer yachting starts here

10 ANNI
VER
SARY

PHOTO GALLERY





CANTIERE
DELLE MARCHE
explorer yachting starts here

10 ANNI
VER
SARY

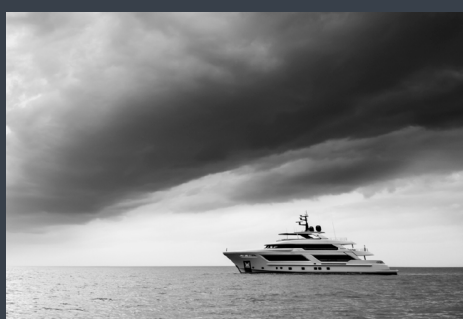




CANTIERE
DELLE MARCHE

explorer yachting starts here

10 ANNI
VER
SARY





CANTIERE
DELLE MARCHE
explorer yachting starts here

10 ANNI
VER
SARY

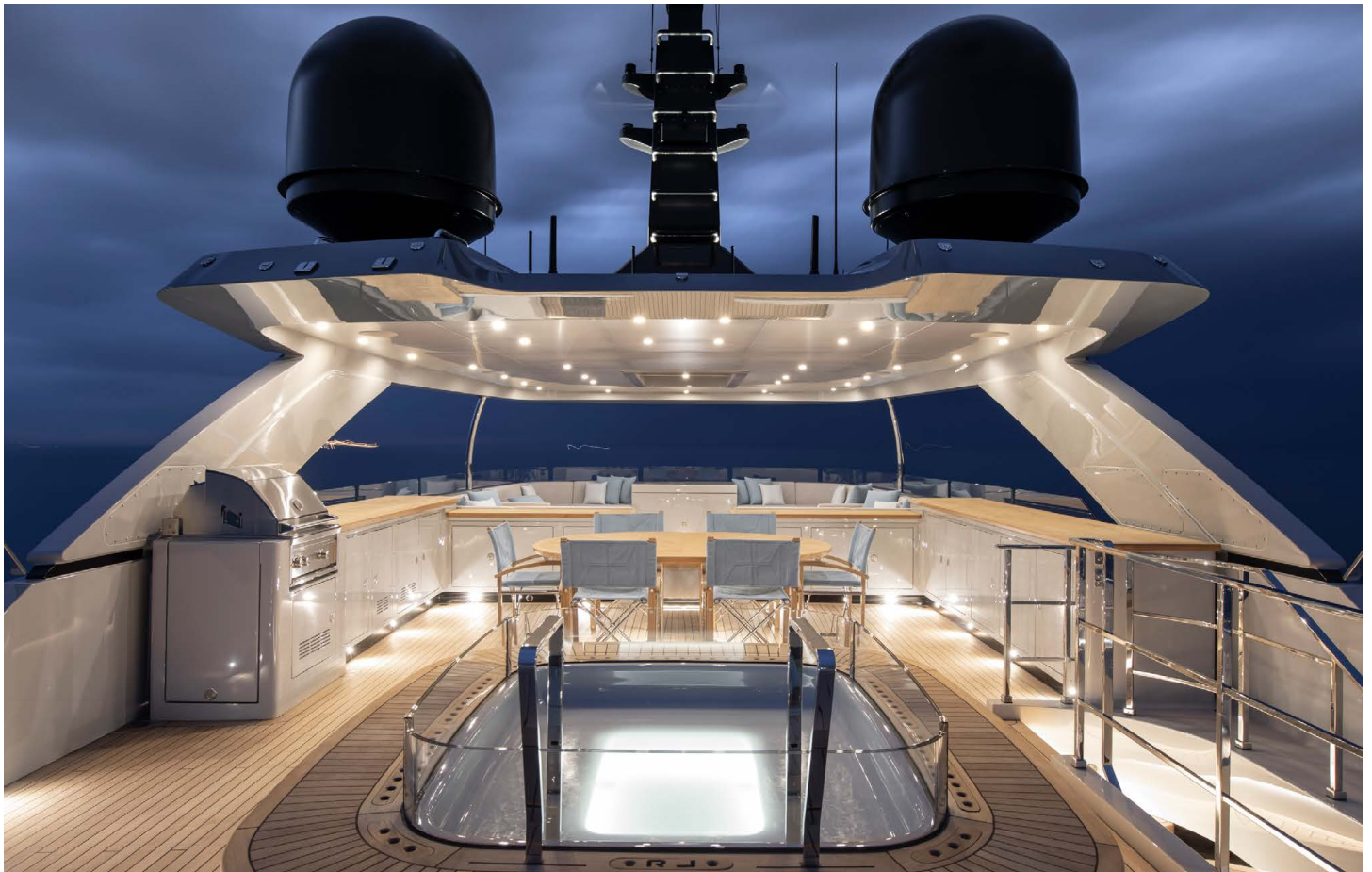


AFT DECKS / STERN VIEW



CANTIERE
DELLE MARCHE
explorer yachting starts here

10 ANNI
VER
SARY



SUN DECK AFT



SUN DECK FORWARD





CANTIERE
DELLE MARCHE
explorer yachting starts here

10 ANNI
VER
SARY



AFT COCKPIT / UPPER DECK



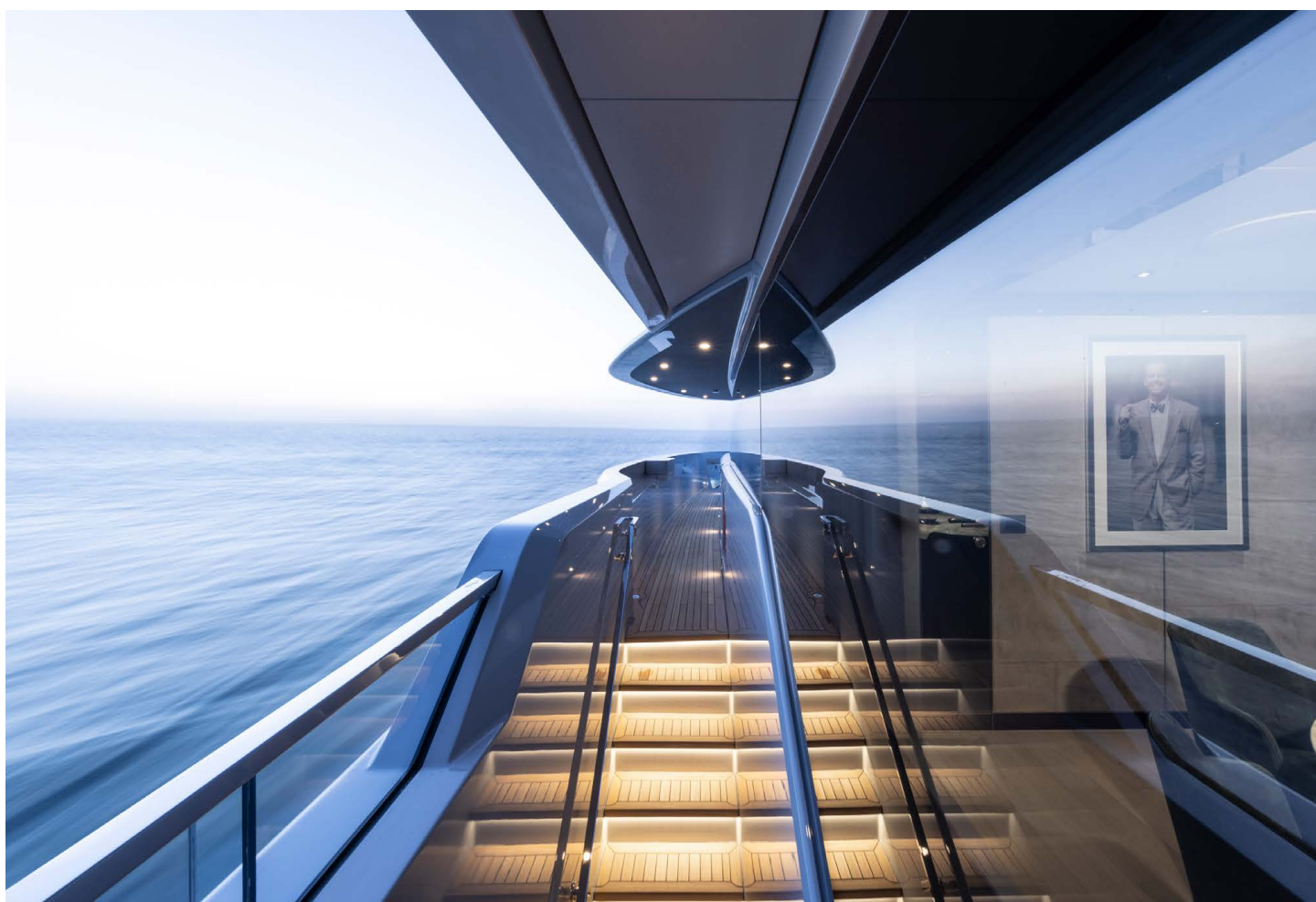


CANTIERE
DELLE MARCHE
explorer yachting starts here

10 ANNI
VER
SARY



STARBOARD SIDE DECK / UPPER DECK



PORT SIDE DECK / UPPER DECK





CANTIERE
DELLE MARCHE
explorer yachting starts here

10 ANNI
VER
SARY



FOREDECK/ UPPER DECK



FOREDECK/ UPPER DECK





CANTIERE
DELLE MARCHE
explorer yachting starts here

10 ANNI
VER
SARY

PHOTO GALLERY INTERIORS



MAIN SALON / MAIN DECK



MAIN SALON / MAIN DECK





CANTIERE
DELLE MARCHE

explorer yachting starts here

10 ANNI
VER
SARY



MAIN SALON / MAIN DECK



MAIN SALON / MAIN DECK

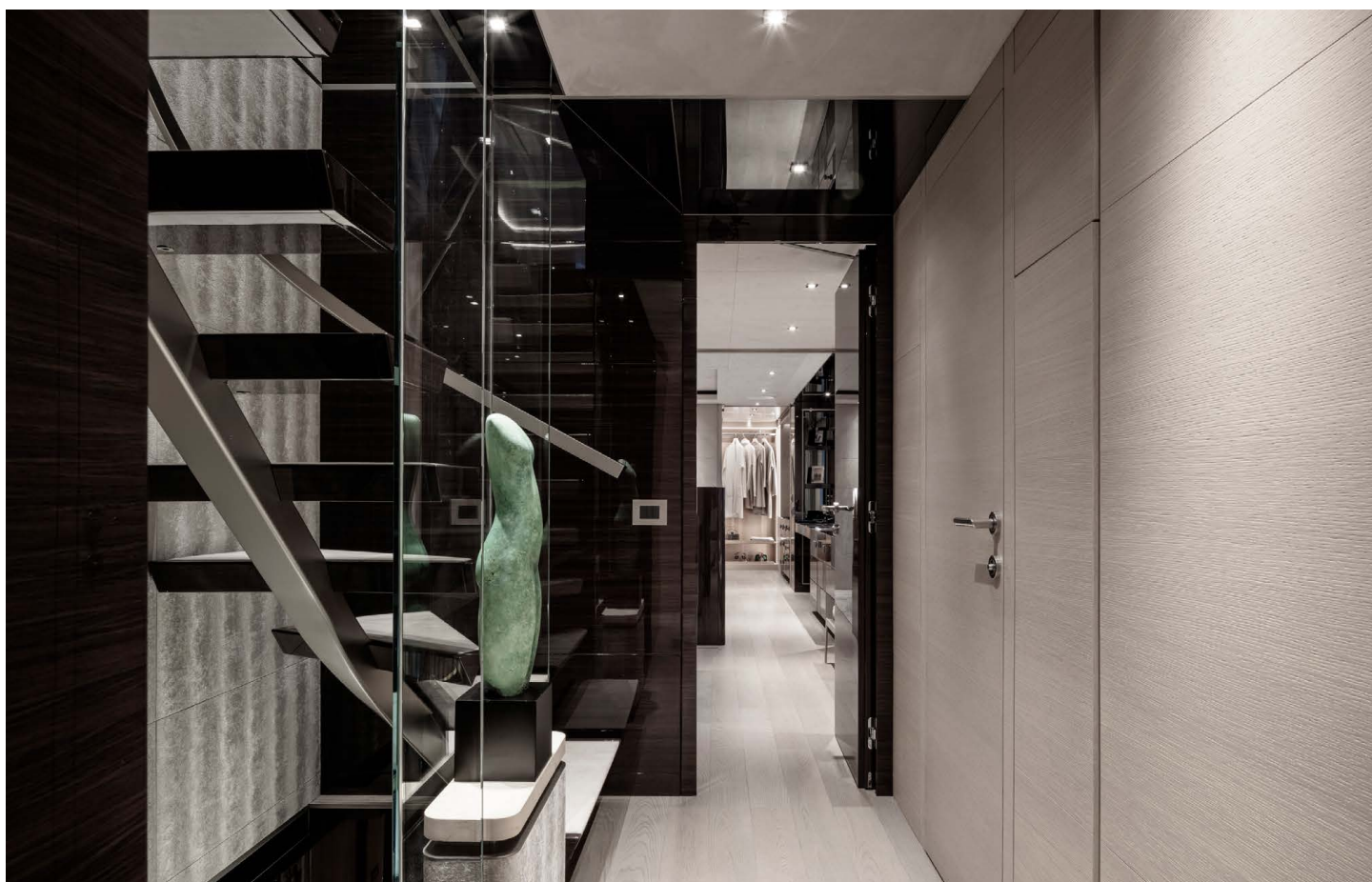




CANTIERE
DELLE MARCHE

explorer yachting starts here

10 ANNI
VER
SARY



LOBBY / MAIN DECK



LOBBY / MAIN DECK





CANTIERE
DELLE MARCHE
explorer yachting starts here

10 ANNI
VER
SARY



OWNER CABIN / MAIN DECK



OWNER CABIN OFFICE / MAIN DECK





CANTIERE
DELLE MARCHE
explorer yachting starts here

10 ANNI
VER
SARY



OWNER CABIN / MAIN DECK



OWNER CABIN / MAIN DECK





CANTIERE
DELLE MARCHE
explorer yachting starts here

10 ANNI
VER
SARY



OWNER CABIN BATHROOM/ MAIN DECK





CANTIERE
DELLE MARCHE
explorer yachting starts here

10 ANNI
VER
SARY



SKY LOUNGE / UPPER DECK



SKY LOUNGE / UPPER DECK





CANTIERE
DELLE MARCHE
explorer yachting starts here

10 ANNI
VER
SARY



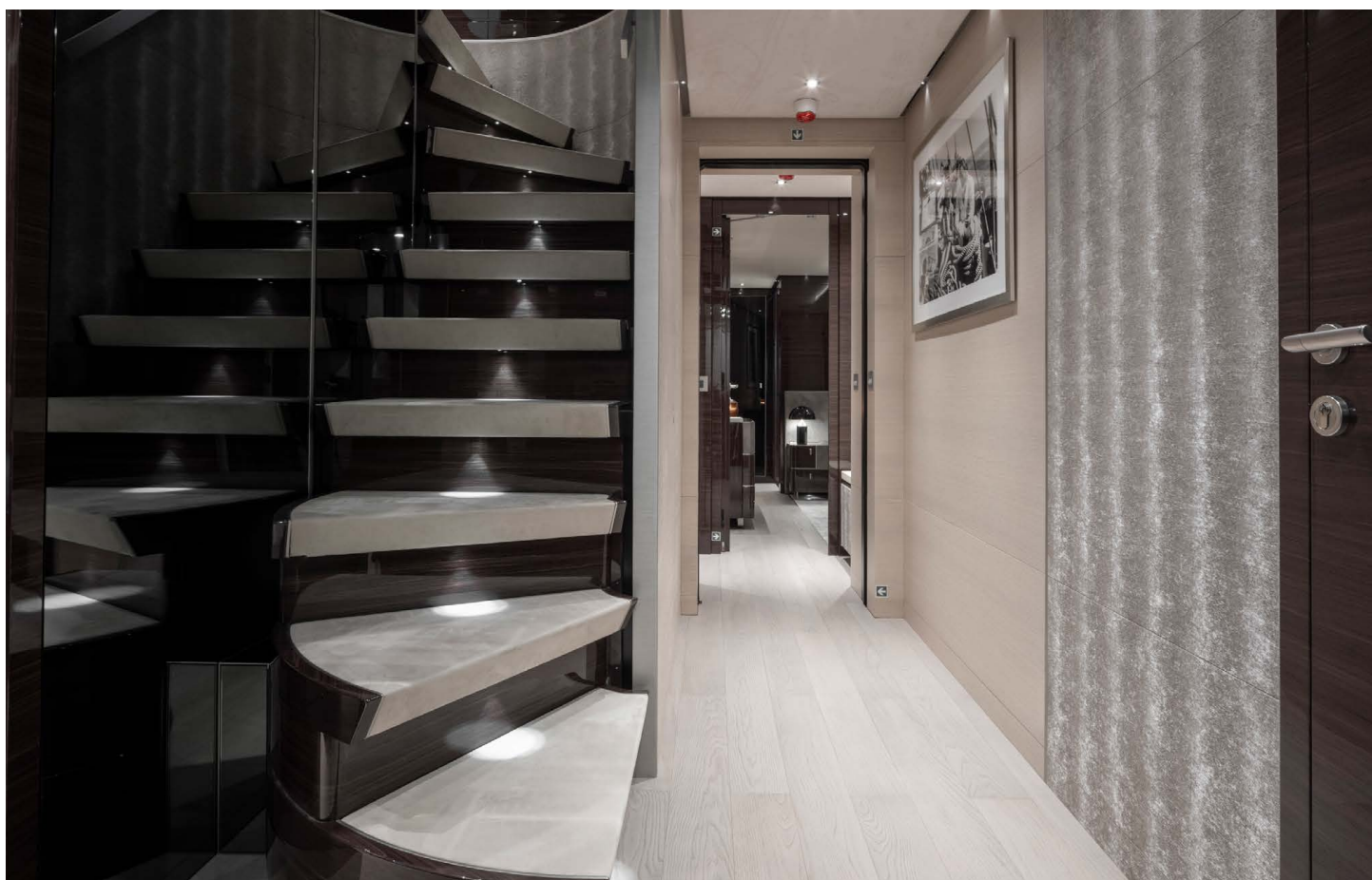
SKY LOUNGE / UPPER DECK





CANTIERE
DELLE MARCHE
explorer yachting starts here

10 ANNI
VER
SARY



LOBBY / LOWER DECK



VIP CABIN PORT SIDE / LOWER DECK





CANTIERE
DELLE MARCHE
explorer yachting starts here

10 ANNI
VER
SARY



GUEST CABIN STARBOARD SIDE / LOWER DECK





TECHNICAL SPECIFICATION

Model

RJ 130

Hull Type

Full displacement

Hull Material

Steel "A" grade

Superstructure Material

Aluminium alloy

DIMENSIONS

LOA

40,51 m / 133 ft

LWL

35,6 m / 116,9 ft

Beam

8,03 m / 26,3 ft

Draught (moulded)

2,52 m / 8,2 ft

Displacement at full load

387 t / 426 US ton

Gross Tonnage

397 GT

SPEED

Maximum

14,5 kn

Cruise

12,8 kn

Range @ 9 kn

5.500 nm

ACCOMODATION

Guest Cabins

5

Guests

12

Crew

7 in 4 cabins



CAPACITIES

Fuel

57.000 l / 15.058 US gl

Fresh water

6.000 l / 1.585 US gl

Black water

1.300 l / 343 US gl

Grey water

4.000 l / 1.056 US gl

Dirty oil

500 l / 132 US gl

New oil

500 l / 132 US gl

MECHANICAL EQUIPMENT

Engines

2x MTU 10V2000M72 2X900
kW @ 2250 Rpm

Water Maker

Idromar MC-5 Duplex
2 x 250 L/hr

Stabilizers

CMC electric Stabilis
Electra LR70

Bow Thruster

CMC Dualis Electra
BTM 85 kW

Black Water Treatment

Selmar Blue Sea 3500 plus

Fuel Separator

Alfa Laval Mod. MIB 303

Toilet System

Tecma model WC Flexline

Boiler

2 x 300 l (79 US gl)
+ 1 x 150 l (38 US gl)

Air conditioning

Summer

Maximum relative humidity 70%,
relative humidity 55%
Outside +38°C
Inside +23°C
Seawater +32°C

Winter

Outside 0°C
Inside +25°C
Seawater +10°C



ELECTRICAL SYSTEM

Main Generators

2 x Kohler 70EFOZDJ 70 kW

**Automatic parallel
between generators**

**Predisposition for future
installation of shore power
converter**

DECK EQUIPMENT

Docking Capstans

Italwinch NC 300

Vertical Windlass

Italwinch NV-19

Anchor

2 x HHP Full Balanced
315 Kg (694 lb)

Anchor Chain

2 x 270 mt, 19 mm / 2 x 885 ft,
0,74 in

Gangway

Sanguineti model Mizar,
700 mm (27 in) wide

Crane

Sanguineti custom 2000 Kg

APPLIANCES

Laundry

- Miele Washing Machine WMH 122 WPS White
- Miele Washing Machine WMH 122 WPS White
- Miele Tumble Dryer TCE 530 WP
- Miele Tumble Dryer TCE 530 WP

Galley

- Miele Fridge K 37673 iD
- Miele Fridge K 37673 iD
- Miele Fridge K 37673 iD
- Miele Freezer FNS 37402 i
- InSink Erator Garbage Disposal 56 - 1972056
- Miele Oven H 7890 BP
- Miele Warming drawer ESW 7010
- Miele Induction Hob KM 7594 FL
- Miele Hood DA 3496
- Miele Microwave Oven M 2234 OBSW
- Miele Dishwasher PG 8133 SCVi
- Miele Dishwasher PG 8133 SCVi
- Irinox Blast chiller Freddy 60 - H602350002
- Irinox Vacuum sealer Zero 36 - H362350002
- Pantry Miele Wine Cellar KWT 6834 SGS
- Pantry Isotherm Ice Maker Icedrink clear



Sky Lounge

- Frigonautica Fridge
FRS 130 RC
- Isotherm
Ice maker Icedrink clear

Sun deck

- WEBER Gas barbecue
SUMMIT S-470 INOX
- Isotherm
Fridge Drawer 105lt. Inox
- Barline Icemaker B3015
- Frigonautica
Fridge FR80AC

Main deck

- Isotherm
Fridge Drawer 105lt. Inox

Lazarette

- Miele Washing Machine
WMH 122 WPS White
- Miele Tumble Dryer
TCE 530 WP
- Nr 2 units deep freezers

ENTERTAINMENT SYSTEM

Owner Cabin

- 49' TV
- Denon amplifier
- Apple TV
- I-Pad mini and I-dock
- Telephone Jacob Jensen
- Nr 2 speakers B&W 130 W
- Nr 1 subwoofer 250 W

Main Salon

- Denon amplifier
- I-Pad mini and I-dock
- Nr 4 speakers B&W 130 W
- Nr 1 subwoofer 250 W
- Panasonic cordless
- Predisposition TV cable

Sky lounge

- 65' TV drop down from ceiling
- Denon amplifier
- DVD-blue ray
- I-Pad mini and I-dock
- Nr 7 speakers B&W 130 W
- Nr 1 subwoofer 280 W
- Apple TV
- Panasonic cordless

VIP Cabins

- Telephone Jacob Jensen

Guest Cabins

- Telephone Jacob Jensen



Crew mess

- 40' TV
- Sinto CD/DVD Bluetooth
- Apple TV
- Telephone Jacob Jensen
- Nr 2 speakers Sonance 80 W

Galley

- Sonos Amplifier and keypad
- Telephone Jacob Jensen
- Nr 1 speaker Sonance 80 W

Captain Cabin

- 28' TV

Wheelhouse

- Telephone master Panasonic

Main Deck Cockpit

- Sonos Connect
- Powermach Bose 8x250 W
- Nr 4 speakers
Marine Sonance 130 W

Upper Deck Cockpit

- Sonos Connect
- Nr 4 speakers
Marine Sonance 130 W
- Nr 1 subwoofer 250 W

Foredeck

- Sonos Connect
- Nr 2 speakers Marine
Sonance 130 W

Sundeck

- Sonos Connect
- Nr 6 speakers
Marine Sonance 130 W
- Nr 2 subwoofer 250 W
- Powermach Bose 8x250 W

Communication

- GSM antenna and receiver,
wi-fi access points

CCTV system

- Nr 5 cameras (Engine room,
main deck cockpit, upper
deck cockpit, 2 x sidewalks)
and dedicated display
in wheelhouse

NAVIGATION AND COMMUNICATION SYSTEMS

- Nr 4 Hatteland monitors 19'
- Furuno main radar
– FAR-2117 band 12 kW
- Chart plotter system
– Navnet ZTZ BB /
Secondary radar sysem
- Furuno secondary radar
sensor
- Mapmedia chart
for navnet TZZ2 Black box
- Furuno GPS
GP-170 – Wheelmark



- Furuno navigation echosounder FE-800 – Wheelmark
- Furuno B122 transom echosounder transducer
- Furuno doppler speed log (dual axis) DS-80 -Wheelmark
- Furuno network sounder DFF1 B.B. & transducer – back up sounder
- Furuno special hub for navnet TZT2 network
- Furuno RD-33 multidata repeaters
- Furuno wind sensor and NMEA 2000 converter
- Furuno satellite compass SC-70 / GPS#2 Wheelmark
- Furuno fluxgate heading compass – Back up
- Simrad autopilot AP-70 IMO approved – Wheelmark
- Furuno AIS class A transponder
- Furuno bridge alarm system BR-500 – Wheelmark
- Venus magnetic compass Wheelmark
- Furuno main VHF DSC Class A #1 – GMDSS wheelmark
- Furuno VHF DSC class D #2
- Furuno SSB – 150 W – DSC class A GMDSS Wheelmark
- Furuno Inmarsat standard C GMDSS SSAC – Wheelmark LRIT
- Furuno NAVTEX receiver GMDSS
- Ocean signal EPIRB GMDSS – Wheelmark
- Ocean signal sart GMDSS – Wheelmark
- Ocean signal portable VHF – GMDSS – Wheelmark
- Data repeater for Crew Mess area
- Furuno repeater on Radio Room
- Self Standing SSB antennas
- n°3 Towing Lights

TV SAT system

- 2 x Tracvision HD-11



OTHER

- Additional class notation:
COMF (Y) 92, 100;
MON-SHAFT (Y)
- Opacmare transformer
on the stern platform,
5 steps + pop-up
- All-round hull underwater
lights (25 units)
- Heating system on a
Wheelhouse window
- Electric aft Main Deck
and Upper Deck doors
- Custom made bench in
metal in Engine Room
including a vice and
electrical plugs
- Antifouling in sea chest
and sea water piping
- Oil separator DWZ
in bilge system
- Grey water and black water
tank vent pipe fitted with
charcoal filters
- Scuppers in steel 200mm
above main deck. Aluminium
scuppers above main deck
- LED navigation lights
- 2 x bimini with stainless
steel pillars and Sumbrella
fabric cover
- 2x stainless steel L type
sun-umbrellas with deck
connections on stern platform
- Hour counters for each
equipment 3kw or more
- Upper Deck external manual
wind doors in laminated
glass each side
- Electric curtains and blinds
in Main Saloon and Master
cabin (13 pieces)
- Heated marble floors (4 guest
cabins and Owner Cabin)
- Transom gates in
laminated glass
- Double rudder tiller
for wing stations



CANTIERE
DELLE MARCHE
explorer yachting starts here

10 ANNI
VER
SARY

TENDER

- 5,2 m (17') RUPERT R5SS tender with outboard Evinrude 60 Cv is sold together with RJ



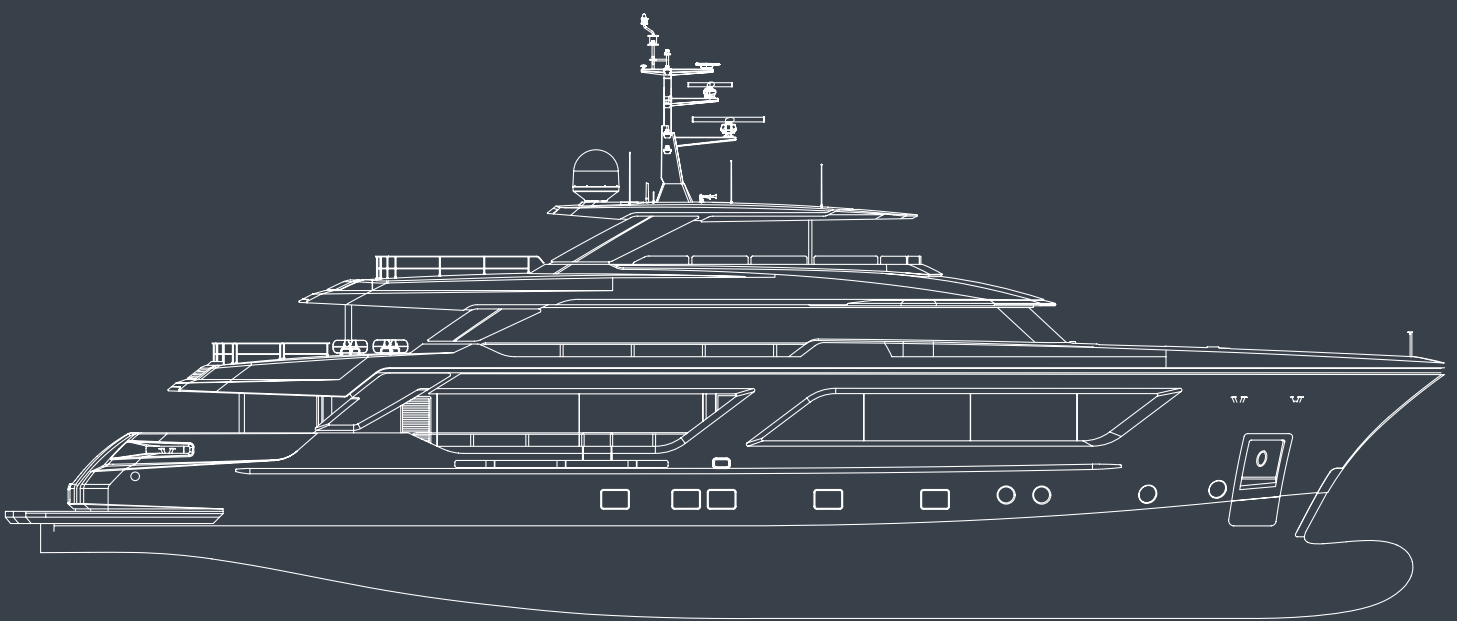
RUPERT R5SS / TENDER



CANTIERE
DELLE MARCHE
explorer yachting starts here

10 ANNI
VER
SARY

GENERAL ARRANGEMENT



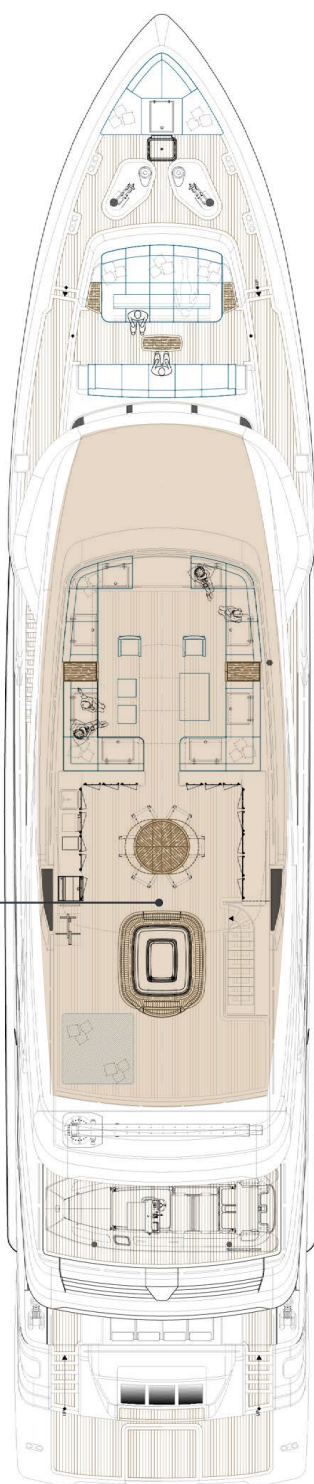


CANTIERE
DELLE MARCHE
explorer yachting starts here

10 ANNI
VER
SARY

FLY DECK

FLYDECK
79.4 sqm / 854.6 ft²





CANTIERE
DELLE MARCHE
explorer yachting starts here

10 ANNI
VER
SARY

UPPER DECK

SUNBED

17.7 sqm / 190.5 ft²

WHEELHOUSE

21.5 sqm / 232.5 ft²

CAPTAIN'S CABIN

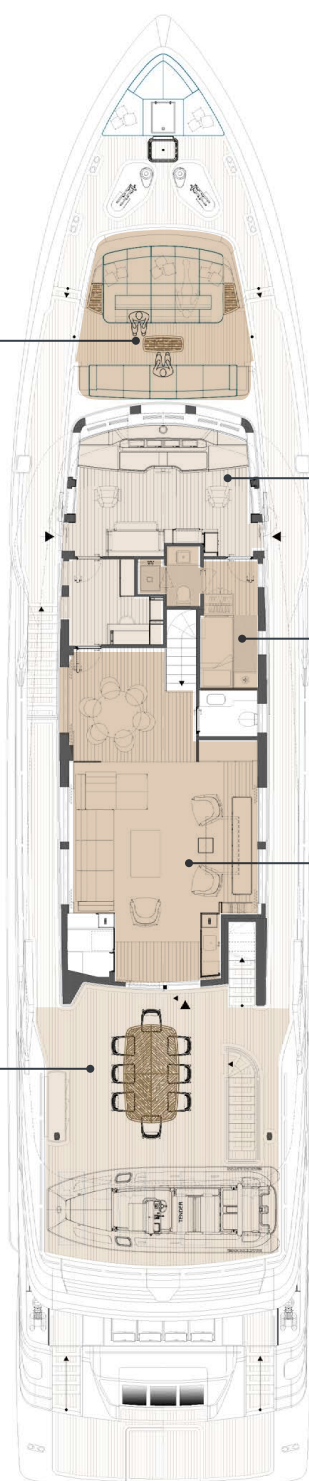
8.4 sqm / 90.4 ft²

AFT COCKPIT

48.2 sqm / 518.8 ft²

SALOON

38.3 sqm / 417.6 ft²

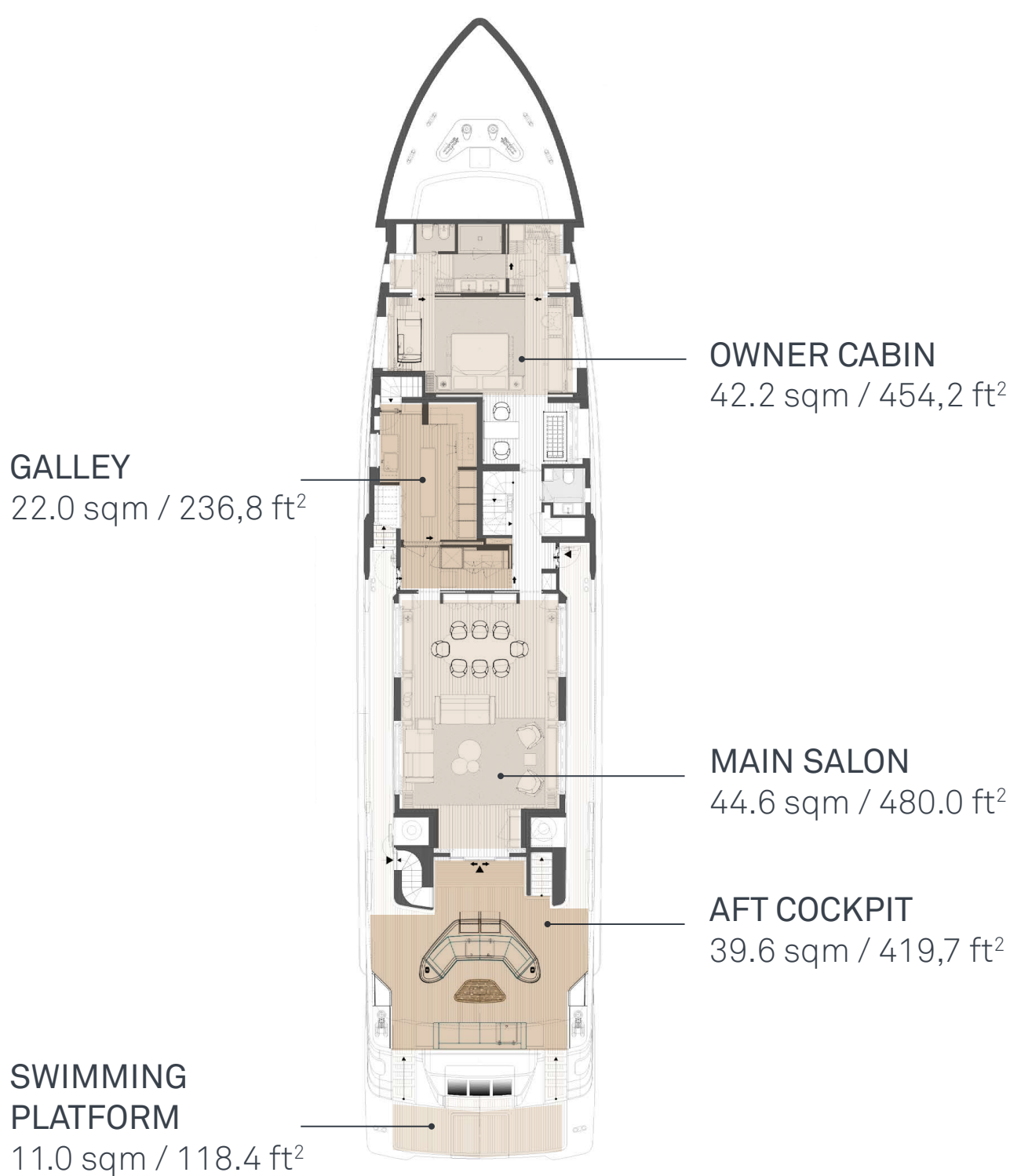




CANTIERE
DELLE MARCHE
explorer yachting starts here

10 ANNI
VER
SARY

MAIN DECK





CANTIERE
DELLE MARCHE
explorer yachting starts here

10 ANNI
VER
SARY

LOWER DECK

CREW QUARTERS
31.3 sqm / 336,9 ft²

GUEST CABIN SX
11.5 sqm / 123,7 ft²

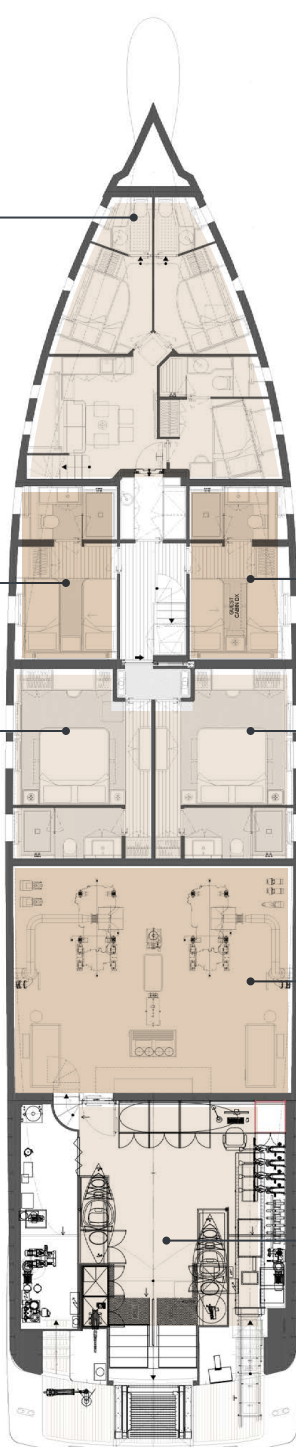
VIP CABIN SX
17.5 sqm / 188,3 ft²

GUEST CABIN DX
11.5 sqm / 123,7 ft²

VIP CABIN DX
17.5 sqm / 188,3 ft²

ENGINE ROOM
45.2 sqm / 486,5 ft²

LAZARETTE
31.8 sqm / 342,2 ft²



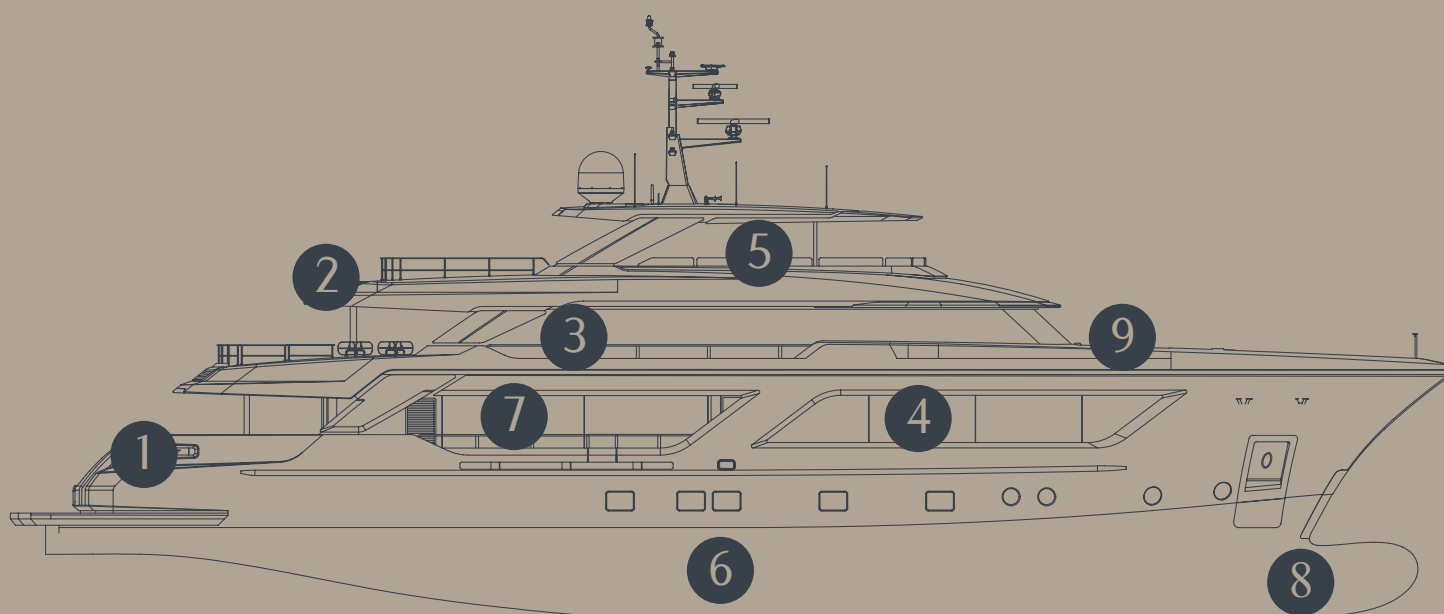


CANTIERE
DELLE MARCHE

explorer yachting starts here

10 ANNI
VER
SARY

BUILD PLUS



- 1 **Steel work** RJ technical areas like the aft mooring island, the freeing ports, the anchor chain well are designed to offer the crew a safe and practical operational area. All parts and systems in stainless steel offer protection against ageing and corrosions. The polished finishing helps to blend the technical area with the materials and finishes of the entertainment areas while also contributing to the elegance of the exterior look of the vessel.

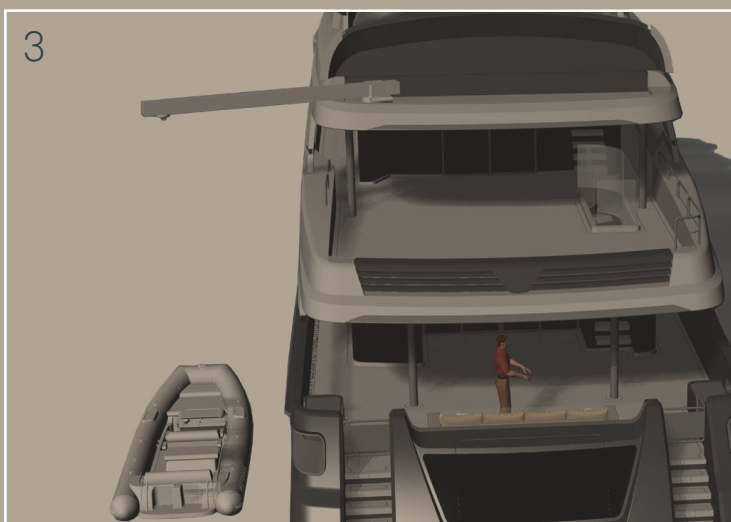
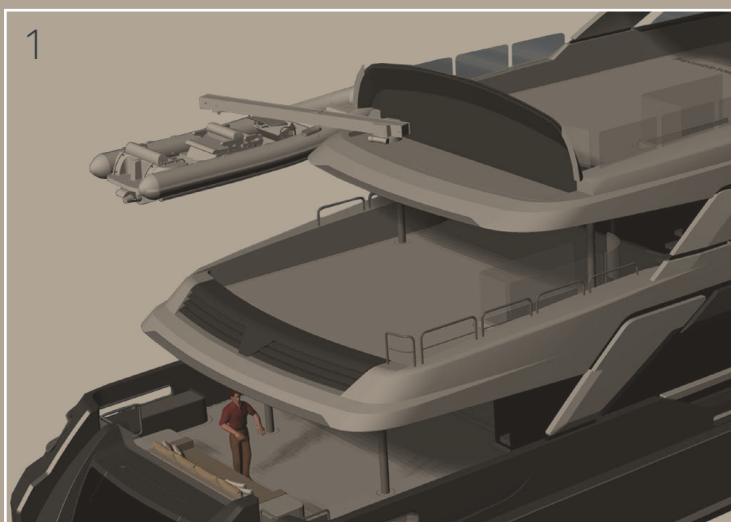
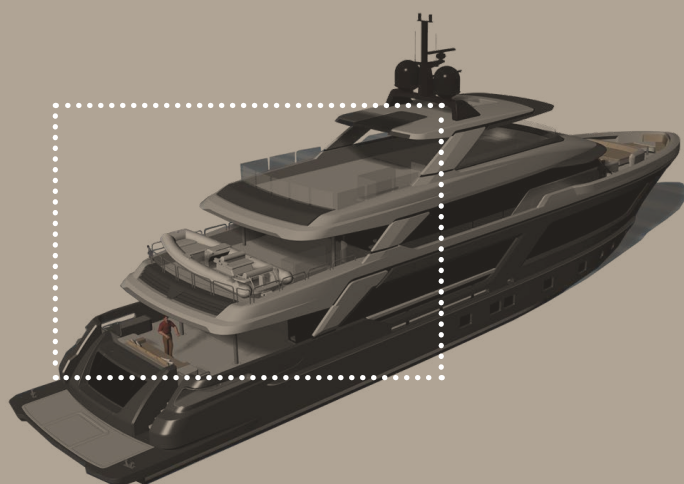


CANTIERE
DELLE MARCHE

explorer yachting starts here

10 ANNI
VER
SARY

- 2 Crane** The crane is located on sun deck aft, away from the entertainment area and concealed under a hatch with hydraulic opening. It can lift tender up to 2 Tons, measuring a length in excess of 6 meters and located underneath on upper deck aft. This solution brings several advantages: it frees the area usually occupied by the tender in the garage, which can therefore be employed for a different use like for example beach club, dive centre, water toys storage etc... It means for the guests to benefit of a larger tender in comparison with the ones find on the garages of yacht of the same size. It's invisible to the guests and conceals to their view a mechanical part which would spoil an entertainment area.





- 3 **Sky-lounge** The RJ boasts a second salon whose size is comparable to the main salon on main deck. This plus comes at no compromises with the other areas on the same the deck, which include a vast aft cockpit and a forward lounge, a day head, the captain cabin and his dedicated office and the renowned well equipped and functional wheelhouse.
- 4 **Glass work** The glass is one of the main protagonists of the design of the RJ. It certainly contributes to lighten the vessel volume and to light up his interiors. By using glass in conjunction with the structural elements of the boat, it also pleases the guests with the view of the sea even in situations where wouldn't have been possible: the upper deck side walls of the sky-lounge are made of floor-to-ceiling glasses. The main salon windows are dimensioned in a way that a seated guest can look outside. The side bulwarks along the port and starboard walkaway are recessed and fitted with glasses. As a final touch and as a testament of designer's attention to details, the backrest of the settee in the aft main deck cockpit has a glass recess that permits the guest seated in front to enjoy the sea-view.
- 5 **Exterior Area** A total of 200 square meters of exterior entertainment area is available to the guests and spread over three decks. The surface is all cladded with 15 mm Burmese teak, and mixes shaded area with open air ones. The outfitting of all exterior area is completed with custom pool, sunbeds with underneath ventilated storage, furniture and appliances.
- 6 **Tunnel and sub lower deck storage** A 14m tunnel connects the engine room to a sub-lower deck located underneath the crew area. The tunnel consents the inspection of the tanks without the need to pass through the guest cabins and it also allow a quick intervention and maintenance on some of the vessel's systems. The sub lower deck is easily accessible from the crew dinette on lower deck and offers plenty of storage space for provision of all sort.



- 7 Service to guests** The guest's satisfaction aboard is greatly influenced by the level of service the crew is able to deliver. For this reason, the RJ layout has been studied to allow the crew to operate efficiently while having their own private space, the crew quarters taking almost 50 sq m of space. Each deck has his own pantry area, thus assuring a rapid preparation of each order. Side walkaways and a dedicated staircase means the crew can be invisible to guests, while on lower deck a well-insulated door allows prevent the staff to use the guest staircase.
- 8 Speed and range** Thanks to the twin MTU engines of 900 KW each, the RJ tops a speed of 14,5 knots, making her the fastest within the CDM fleet of full displacement vessels. At the same time and in line with the Shipyard DNA for long range vessel, she can cruise up to 5.500 nautical miles at 9 knots of speed.
- 9 A pure explorer** While featuring a "white-yacht" and sporty look the RJ is a CDM vessel of the best breed: built in steel and aluminum, 12 mm thick keel plate, independent rudders, overengineered ship systems and back up pumps, well equipped navigation and communication package, plenty of storage aboard, ocean crossings capabilities and range.



"A good result – a good yacht – is always the result of a perfect team work. It's essential."

Francesco Paszkowski - Designer

Francesco, you are one of the most successful and talented Yacht Designer worldwide and you have worked for the best companies of the yachting industry: what is your first impression after having started this cooperation with CdM?

RJ 130's owner had precise ideas how his yacht should look like and Cantiere delle Marche always made the most to combine her owner's wishes and the design issues with technical aspects. We can really say a perfect team work has been created among all people working at this yacht.



The RJ is the result of time and energies spent together with the CdM team and the Owner. How difficult is to deal with all parties involved and create the perfect synthesis? Has the renown quality of processes, passion and flexibility of CdM, together with the professionalism of CNI New Build Dept helped so far?

A good result – a good yacht – is always the result of a perfect team work. It's essential. We had already worked with RJ 130's owner at another yacht and we were confident we could meet his wishes for his new boat. Although It's our first experience with CdM team, a very good relationship has been established from the very first day. It was an easy start and it's going on better and better. It looks like we have been working together since longer. CdM experience together with CNI New Build Dept contributed effectively to solve a couple of aspects of the process.

Could you tell us more about the RJ 130? What was the brief and what is your aim with this stunning design?

The owner brief was for an explorer with large social spaces both inside and outside, offering a close contact to the sea in order to enjoy his - and his guests- staying on board during longtime cruising everywhere. Lot of storage for toys was also requested. We focused on combining the essence of an explorer with peculiar features in terms of comfort and liveability to design the yacht her owner is expecting.

www.cantieredellemarche.it

10 ANNI
VER
SARY | CANTIERE
DELLE MARCHE
explorer yachting starts here